



MTI Hinley Video Surveillance Viewer

STANDARDS BASED

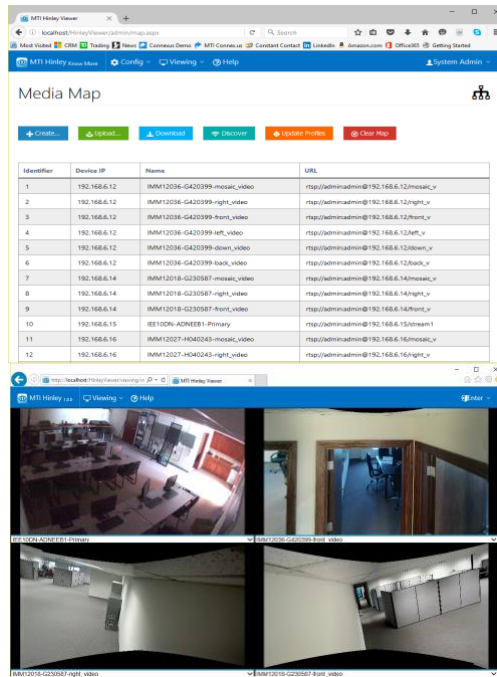
The MTI Hinley Viewer application utilizes two international standards (OnVIF Profile S and RTSP) to directly integrate with any video surveillance device which implements these standards.

BROWSER-BASED

Hinley is administered through a browser-based portal, which allows the administrator to establish all of the media points and views for the various devices that may connect and view video streams.

CAMERA CONTROL

Through the use of OnVIF Profile S, Hinley can be used to control PTZ cameras, call up presets, and send PTZ cameras to their "Home" point. Hinley can also play the audio stream from a camera with audio capabilities.



Major Features

- Standards-based video interface
- Browser-based administration
- Responsive to various screen sizes and device types.
- PTZ and preset functionality is built-in.
- Integrates directly with MTI ProVision HMI.

The video surveillance industry is an ever changing environment, which makes integration with the numerous manufacturers and models difficult. But, as the industry has developed, all reputable manufacturers have chosen to comply with two standards which simplify the integration process. The first standard is OnVIF Profile S. This standard provides configuration and control information from each compliant device. This allows Hinley to identify each camera on a network, access the streaming information about the camera, and also control the PTZ functionality of the camera.

The second standard is Real-Time Session Protocol (RTSP), which is typically implemented as part of OnVIF Profile S, but can be used as its own standalone protocol. This allows Hinley to access the video and audio streams of a device and display them to the user.

Hinley was developed by MTI to eliminate the need for manufacturer-specific SDKs and interfaces which required a great deal of time in development and support. Through the use of the afore mentioned standards, Hinley can pull video and audio streams from various camera manufacturers on the same network without the need for third-party, manufacturer-specific viewing software. Hinley provides a "Media Map", which uniquely identifies each video device on the network and then allows integrating applications like MTI's ProVision HMI software to call for camera views based on this map.

Hinley can be used with MTI's ProVision detention control system or as a stand-alone application. When sold with ProVision, it is included at no additional cost. When sold as a stand-alone application, there is a per-seat license fee.

FREE SUPPORT

MTI has always provided free telephone technical support during normal business hours (Monday – Friday, 8-5 CST).

This support is provided for the life of the system. Additional after-hours support options are also available.

FREE TRAINING

MTI has also always provided free periodic technician training at our headquarters in Greenville, AL. This training is free to any owner or service contractor representing the owner. Certification is also available.

SIMPLE LICENSING

MTI's software licensing is simple and modeled after the licensing practices of companies like Microsoft™. The license is per computer and a one-time purchase for each computer. Updates to the current major version of our applications is free for the lifespan of the operating system.

Including Hinley In Your Design

The Hinley Viewing application falls under the typical Division 28 specification. Whether you are writing a specification for an RFP or modifying design documents for new construction, it is simple to include Hinley in your specifications. Here is a list of some items that you can add or change to add Hinley to your project.

- Specify the use of video surveillance viewing applications which implement OnVIF Profile S and RTSP.
- Include HP™ as an approved computer/server manufacturer.

System Requirements

- At least 100BaseT network connection to all devices.
- At least a 1Gb network connection between switches.
- Uninterruptable Power Supplies for all workstations and control components.
- Cabling certified to BICSI and TIA standards.
- Workstation requirements:
 - 2.5 Ghz or higher, quad-core processor.
 - 16 GB of SDRAM
 - Solid State Hard Drive
 - Microsoft™ Windows© 10 or later.

MTI Products

[Detention Control Systems](#)
[Access Control Systems](#)
[Jail Management Systems](#)
[Video Visitation Systems](#)
[Free Telephone Tech Support](#)
[Free System Training](#)