



# MTI ProVision Detention Control System

## NETWORK BASED

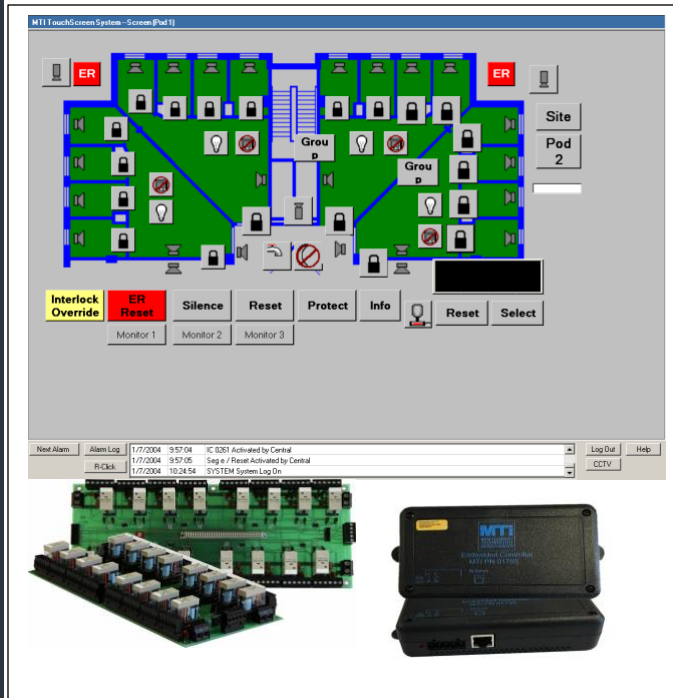
The MTI ProVision detention control system is designed using the latest IP-network technologies. The communications between the control stations and the Embedded Controller are directly based on the TCP/IP protocol.

## INDUSTRY CERTIFIED

The MTI system is UL294 and UL508 listed. Additionally, MTI is an ISO9001:2015 certified company.

## BACKWARDS COMPATIBLE

The system is designed to be backwards compatible to MTI termination boards that have been manufactured since MTI's inception in 1987.



## Major Features

- IP-Based Communications
- Simple, spreadsheet style programming.
- The same controller provides PLC and Access Control functionality.
- Low learning curve for design software.
- Modular termination boards provide simple installation.
- Backwards compatibility to the termination boards.
- Browser-based maintenance interface to Embedded Controller.
- Each controller capable of 4096 I/O points.

The MTI ProVision control system is designed specifically for high-capacity security control scenarios, like those of a detention facility. The MTI system centers around the Embedded Controller (part number 91795), which provides all of the behavior and functionality of a Programmable Logic Controller (PLC), but does so much more. For example, no other PLC provides integrated access control functionality. The reverse is also true: no access controller provides PLC functionality. Yet, because of the need that detention facilities have to provide both logic control and access control, MTI has designed a device in the Embedded Controller that meets all of the security needs of a detention facility without the need to integrate two different security-related systems.

The user interface for the ProVision detention control system utilizes a Microsoft™ Windows® workstation and a Touchscreen monitor running MTI's ProVision v.5 Human-Machine-Interface (HMI) application. ProVision has a long track record (since 1995) of providing a simple user interface that is quickly understood. It also includes the design software, ProDesign, which uses a very simple design process that allows the administrator or engineer to easily add and change screen objects. In many cases, the facility's maintenance or IT staff can modify their system design once they participate in MTI's free 2-day training course.

The workstation also includes the MTI programming interface, PLC Software, which uses a spreadsheet layout to easily add control points for the Embedded Controller.

#### FREE SUPPORT

MTI has always provided free telephone technical support during normal business hours (Monday – Friday, 8-5 CST).

This support is provided for the life of the system. Additional after-hours support options are also available.

#### FREE TRAINING

MTI has also always provided free periodic technician training at our headquarters in Greenville, AL. This training is free to any owner or service contractor representing the owner. Certification is also available.

#### SIMPLE LICENSING

MTI's software licensing is simple and modeled after the licensing practices of companies like Microsoft™. The license is per computer and a one-time purchase for each computer. Updates to the current major version of our applications is free for the lifespan of the operating system.

## Including ProVision In Your Design

The MTI ProVision Detention Control System meets or exceeds all of the functional requirements of a typical Division 28 specification. Whether you are writing a specification for an RFP or modifying design documents for new construction, it is simple to include the MTI system in your specifications. Here is a list of some items that you can add or change to add the MTI system to your project.

- Include the MTI Embedded Controller (part number 91795) as an approved Programmable Logic Controller.
- Also include the MTI Embedded Controller as an approved Access Controller.
- Include MTI ProVision as an approved Human-Machine-Interface Software Application.
- Allow for the use of a "Spreadsheet" programming method, in addition to "Ladder Logic" programming.
- Allow for the use of manufactured termination boards for locking control.
- Include HP™ as an approved computer/server manufacturer.
- Allow or require the use of IP-based network communications between the PLC and the HMI.
- Require UL294 listing, which is the proper listing for door control.

## System Requirements

- At least 100BaseT network connection to all devices.
- At least a 1Gb network connection between switches.
- Uninterruptable Power Supplies for all workstations and control components.
- Cabling certified to BICSI and TIA standards.
- Workstation requirements:
  - 2.5 Ghz or higher, quad-core processor.
  - 16 GB of SDRAM
  - Solid State Hard Drive
  - Microsoft™ Windows© 10 or later.

#### MTI Products

[Detention Control Systems](#)  
[Access Control Systems](#)  
[Jail Management Systems](#)  
[Video Visitation Systems](#)  
[Free Telephone Tech Support](#)  
[Free System Training](#)